



# Manistee County Board of Commissioners

Manistee County Courthouse • 415 Third Street • Manistee, Michigan 49660

CHAIRPERSON  
Jim Krolczyk  
VICE-CHAIRPERSON  
Ken Hilliard

Mark Bergstrom  
Alan Marshall  
Richard Schmidt  
Brook Shafer  
Karl Waitner

CLERK

Jill Nowak  
(231) 723-3331

CONTROLLER/ADMINISTRATOR

Thomas Kaminski  
(231) 398-3500

## MANISTEE COUNTY GREEN TEAM/RECYCLING COMMITTEE

Thursday, April 25, 2013  
2:00 P.M.

Manistee County Courthouse & Government Center  
Board of Commissioners Meeting Room

### AGENDA

- 1) P.A. 69 Recycling Update - Sarah Archer
- 2) Michigan Energy Report - APPENDIX A
- 3) Other Items From Committee Members
- 4) Adjournment



Let the sun save you money!

*In this issue...*

- Cherryland News .....1
- Michigan Energy Fair..1
- Window News.....2
- Sonali Solar.....2
- GVSU.....3
- K-Light.....3
- Energy Saving ideas...4

**Energy Fun Fact....**  
 An energy-smart clothes washer can save more water in one year than one person drinks in an entire lifetime!



Michigan Energy Fair 2012

# Michigan Energy Report

Contractors Building Supply

April-May 2013

## Cherryland Electric Solar Garden

CBS has been awarded a contract to work with Cherryland Electric Cooperative on a new solar garden at the Grawn, MI headquarters. The work has begun and a ribbon cutting ceremony is expected to take place on April 16<sup>th</sup>. The solar garden has the potential for 360 panels. CEC has already started selling panels to rural electric members. Here is how the process works as explained by Tony Anderson, General Manager of Cherryland Electric Cooperative:

“Individuals will sign a 25-year lease agreement for a one-time fee of \$470 per solar panel. We will start with an offering of 48 panels to be built on land next to the CEC headquarters building. If interest exceeds this number, we can easily scale up the solar array to a bigger number in a short time. Other locations around the service territories may be possible if interest warrants”.

If you are interested in seeing the progress of the project, drive by Cherryland Electric Cooperative in Grawn and see how the project is coming along or visit their website at [www.cecelec.com](http://www.cecelec.com)

## Michigan Energy Fair

June 7 & 8, 2013

**The Michigan Energy Fair** is an event held every year to allow those in the sustainable energy industry an opportunity to network with one another while also educating the public. **The fair is a great learning experience!!** The fair combines local food, fun activities, workshops, engaging speakers, and music thrown in for good measure. Friday will have workshops from 12:00 n - 5:00 pm for professionals in the energy field and an evening reception. There will be a \$25 registration fee. Saturday will be a free day for the general public with exhibits opening at 9:00 am and workshops and other activities going from 10:00 am - 5:00 pm. There will be a Saturday evening banquet. This year's fair takes place at the Mason County Fairgrounds in Ludington, MI. If you have an interest in energy, or simply want to find out what all the buzz is about, contact Samantha Keeney at 517-646-6269. GLREA is accepting exhibitors, vendors, and volunteers! Go to [www.glrea.org](http://www.glrea.org) to sign up!

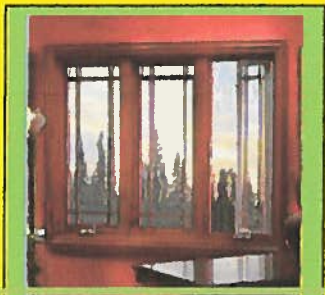
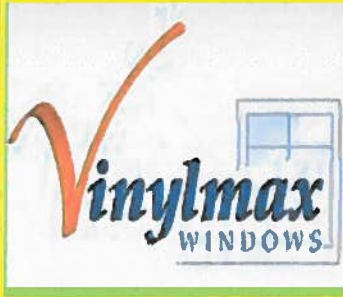


## Window News

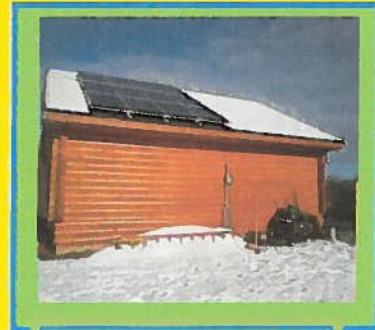
Our *Anti-Glare*  
*High Performance*  
glazing system meets  
or exceeds the U.S.  
Department of  
Energy standards.

**R5**  
TECHNOLOGY

*Low-emissive glass* *R5 Technology* *& tinted glass*



Sherwood Window



3KW Roof Mount

This first quarter of 2013 has brought many great things to Contractors Building Supply. Our window manufacturer has successfully merged with another. Vinylmax and Thermolock have reached an agreement for Vinylmax to acquire Thermolock Mfg. Vinylmax LLC is a vinyl replacement window and door company, headquartered in Hamilton, OH. Family owned and operated for more than 30 years, the company has received recognition as one of the Window and Door magazine's "Top 100 Manufacturers" for the past 10 years.

With this new change, I want to introduce the Sherwood product line. Sherwood windows are custom made by our skilled craftsmen specifically for your home. These windows are engineered to combine the superior performance of vinyl with the amazing detail of hand selected hardwood.

**SPRING SHERWOOD PROMOTION:** Free inside finish on all Sherwood orders. Choose from 11 professionally finished Sherwin Williams low VOC interior stains. This promotion expires May 1st.

## Sonali Solar April Update

As I write this letter our solar activity in Michigan is BOOMING! Our new relationship and joint venture with Sonali Energees USA, LLC is exciting and will bring a large, quality manufacturer from Gujarat, India into Northern Michigan as a partner with Contractors Building Supply, Inc. Needless to say we are excited and we hope you and your family will be too! We currently are awaiting Underwriters Laboratory approval to assemble Sonali Photovoltaic Panels at our manufacturing facilities in Copemish, Michigan. We anticipate that we will be assembling PV panels of various sizes 230-240-250-280 and 300 watt in late May or early June. Michigan jobs and Michigan solar products are growth catalysis's for our Northern Michigan economy. We will be distributing products throughout Michigan and the contiguous states around Michigan. In addition we will be supplying some photovoltaic products to the Sonali facilities in New Jersey and the east coast.

I hope you are enjoying your spring,

Allan O'Shea  
President

## Grand Valley State University

Contractors Building Supply has been awarded a contract to build a Solar Testing Facility at GVSU. The project will entail a series of solar panels attached to a background of various angles and heights. The unique purpose of this study is to determine differences between roof angles and pitches and how snow cover and dirt or sediment deposits can affect solar production in Michigan. The study will last a year or more and we are pleased to be part of the Grand Valley research experience.

With the cost of solar products declining rapidly over the past year or two it is important to note that parity with current electricity costs is 13 cents a Kilowatt Hour and that is right where we are at when comparing to current costs. Solar Electricity is now less than a 10 year payback.

## K-Light Essential Lantern

The K-LIGHT Lantern is an innovative, versatile, eco-friendly rechargeable lantern, flashlight and cell phone charging system. Built to withstand the harshest environments - including torrential rain and bitter cold - the K-LIGHT Lantern is approximately the size and weight of a 16oz bottle of water. During prolonged power outages, its ability to work "off the grid" using rechargeable, NiMH batteries becomes invaluable. Its ability to charge virtually any cell phone made today makes it an indispensable tool when communications are critical. This unique combination makes the K-LIGHT unlike any other lantern or flashlight available today. Small, lightweight and rugged, the K-LIGHT is perfect for outdoor activities such as camping, RV-ing, boating and hiking. The K-LIGHT Lantern is the ideal emergency light source for home and car, as well as a must-have for recreational outings. With its adjustable stand it creates an ultra-handly, hands-free task light designed to direct light precisely where you need it. Highly water-resistant and usable as either a flashlight or lantern, the K-LIGHT Lantern can be charged and used virtually anywhere, no matter the situation. With a 100,000 hour runtime (approximately 8-10 years of daily use) and landfill-disposable batteries, the environmental footprint of the K-LIGHT Lantern is barely detectable. Even better, without replacement batteries to buy, the cost of using the K-LIGHT Lantern ranges from mere pennies per charge to completely free. Over 30,000 of these lanterns have been sold in Africa. If you are interested in purchasing this soon to be made in Michigan product, contact CBS.

Page 3 of 4

**Energy Fun Fact...**  
Some new refrigerators are so energy-smart they use less electricity than a light bulb!

**Did you know.....**  
An automatic dishwasher uses less hot water than doing dishes by hand - an average of six gallons less, or more than 2,000 gallons per year.



K-Light Emergency Lantern

**WOW..Did you know this?**

A compact fluorescent light bulb uses 75 percent less energy than a regular bulb - and it can last up to four years.

**Did you know....**  
A crack as small as 1/16th of an inch around a window frame can let in as much cold air as leaving the window open three inches!



## Energy Saving Ideas.....

**Call or email CBS today for your free quote and learn how we can help you have a renewable 2013!**

**Contractors Building Supply**  
16880 Front Street  
Copemish, MI 49625

**Phone:**  
(888) 378-3160

**Fax:**  
(888) 854-9552

**Email**  
[info@windowsswindandsolar.com](mailto:info@windowsswindandsolar.com)

**Website-**  
[www.windowsswindandsolar.com](http://www.windowsswindandsolar.com)

**Visit us on Facebook-**  
[www.facebook.com](http://www.facebook.com)

### MEET THE TEAM.....

Allan O'Shea-President

Devon O'Shea-  
Mechanical Technical Engineer

Tyson O'Shea-  
Window Division Manager

Aaron O'Shea-  
Energy Efficiency and  
Project Coordinator

Lynda O'Shea-Office Manager

Pam Gam-  
Renewable Energy Assistant

Tom Bigelow-  
Warehouse/Deliveries

**\*Turn off lights when you leave the room or an area that is unoccupied, especially at night and on weekends**

**\*Take advantage of sunlight, if you can. During the day, work in rooms with windows where you don't need artificial light.**

**\*Shut down computers and turn off monitors at the end of the day.**

**\*Set printers and copiers to go into a "Power save" mode after one hour of idle time, and turn off over weekends. Connect PCs, monitors, fax machines and computer "peripherals" to one power strip, and then turn off that power strip when not in use.**

**\*Consider updating aging computers, monitors and printers with newer versions. Check for EnergyStar® accreditation on new office equipment, especially bulk purchased equipment. Information can be found at [www.energystar.gov](http://www.energystar.gov).**

**\*Use laptop computers and ink jet printers, if available, since they use 90% less energy than desktop and laser printers.**

**\*Close drapes and blinds to keep heat/cold out.**

**\*Implement paper-reducing strategies, such as double-sided printing, re-using paper, and using e-mail instead of sending memos or faxing documents not only to save energy, but to conserve other resources.**

**\*Adopt a last-person-out policy. The last person to leave labs, lecture rooms and meeting rooms should be responsible for turning off lights and unnecessary equipment.**

**\*Fume hoods are a major source of energy consumption. Lab workers should keep fume sashes at a minimum working height after setting up experiments, and close sashes when not in use.**

**\*Turn off lights in unoccupied offices, classrooms, conference rooms and restrooms. Check these areas as you leave the office for the day, especially before weekends and holidays.**

**\*Keep exterior doors and windows closed in climate controlled spaces. This reduces heat loss in the winter and heat gain in the summer.**

**\*Dress appropriately for the seasons and the comfort level of your work area.**

**\*Recycle every chance you get!!!**

Contractors Building Supply  
16880 Front Street  
Copemish, MI 49625  
888-378-3160

